



AL-MARK™

MATTE & GLOSS ALUMINIUM

Specifications



Material

- » Anodized Aluminum

Finish Available

- » Matte
- » Gloss

Sheet Size

- » 500 x 1000 mm
- » 1000 x 2000 mm

Chemical Resistance

Excellent:

- » Industrial solvents

Good:

- » Diluted caustic alkalis
- » Moderate sunlight and weathering

Engraving Method

- » Laser
- » Rotating carbide
- » Diamond scratch (drag)

Fabrication

- » Drills
- » Saw cuts
- » Screen print
- » Direct print
- » Hot stamps

Fair:

- » Diluted acids
- » Concentrated caustic acids

Applications

- » Interior/Exterior signage
- » Legend Plates/Industrial tags
- » Control Panels
- » Furniture Industry
- » Consumer Electronics
- » Aviation Industry
- » Laboratory/Surgery/Hospital
- » Automobile Industry

Poor:

- » Concentrated acids

Characteristics

- » Matte or Gloss finish
- » Uniform surface
- » High surface hardness
- » Excellent wear resistance

About Anodizing

The process of anodizing is more environmentally friendly than other metal finishing processes. Anodizing products do not contain heavy metals, halogens or volatiles (with the exception of organic or integral color anodizing). The most common anodizing effluents are: aluminum sulfate and aluminum hydroxide, which are recycled for the manufacture of aluminum, baking powder, newsprint, cosmetics or fertilizer or used by industrial wastewater treatment systems.

The hardness of AL-Mark™ is about 8-9 on the MOHS scale of mineral hardness (i.e. between quartz and Ceramic), yet it is also brittle. Please note: the sheet can be bent; however, hairline cracks will emerge in and around the bent area due to the hard exterior surface.

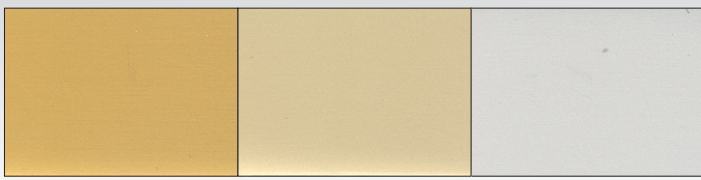
Surface Finish

Rowmark's AL-Mark™ is anodized and two-sided. The primary "first" surface is masked for protection and controlled against imperfections. The "secondary" surface, which is not controlled, may experience some minor imperfections or abrasions from production and shipping if not handled with necessary care.

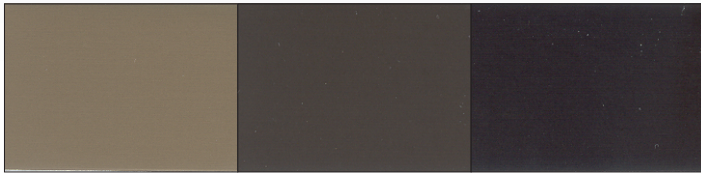
AL-MARK™ MATTE

Colored anodized aluminum substrates from Rowmark are known for extraordinary durability in industrial nameplate and label applications.

AL-Mark™ quality and appearance is perfectly suited for applications such as control panels, plaques, signage, specialty photography, and more.



Matte Gold (301XX9897 add "FS" for full sheet)
Matte Champagne (301XX5297 add "FS" for full sheet)
Matte Natural (301XX9797 add "FS" for full sheet)



Matte Bronze (301XX9397 add "FS" for full sheet)
Matte Dark Brown (301XX6397 add "FS" for full sheet)
Matte Black (301XX2097 add "FS" for full sheet)



Matte Red (301XX4097 add "FS" for full sheet)
Matte Blue (301XX3097 add "FS" for full sheet)
Matte Green (301XX7097 add "FS" for full sheet)

Matte Availability	0.5	1.0	1.5	2.0	2.5	3.0	4.0
Natural (9797)	●	●	●	●	●	●	●
Champagne (5297)	●	●	●	●	●	●	●
Gold (9897)	●	●	●	●	●	●	●
Bronze (9397)	●	●	●	●	●	●	●
Dark Brown (6397)	●	●	●	●	●	●	●
Black (2097)	●	●	●	●	●	●	●
Red (4097)	●	●	●	●	●	●	●
Green (7097)	●	●	●	●	●	●	●
Blue (3097)	●	●	●	●	●	●	●

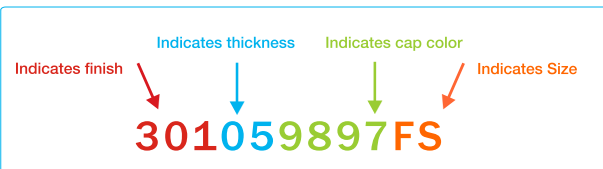
AL-MARK™ GLOSS

AL-Mark™ is readily available in nine rich finishes in both a gloss and matte version, in many popular sheet thicknesses and sizes.

Contact your Authorized Rowmark Distributor for custom inquiries.

Item Code Reference for Matte and Gloss AL-Mark™

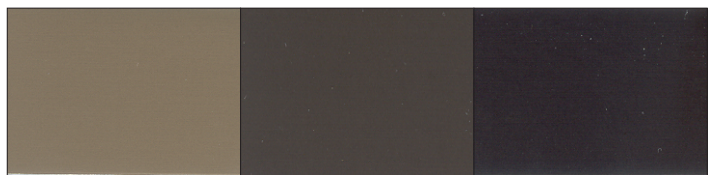
Example: Matte, 0.5 mm, Gold, 2000 x 1000 mm



Finish	Thickness	Finish/Color	Sheet Size
301 - Matte	05 = 0.5 mm	9797 = Natural	FS = 2000 x 1000 mm
302 - Gloss	10 = 1.0 mm	5297 = Champagne	Left blank = 1000 x 500 mm
	15 = 1.5 mm	9897 = Gold	
	20 = 2.0 mm	9397 = Bronze	
	25 = 2.5 mm	6397 = Dark Brown	
	30 = 3.0 mm	2097 = Black	
	40 = 4.0 mm	4097 = Red	
		7097 = Green	
		3097 = Blue	



Gloss Gold (302XX9897 add "FS" for full sheet)
Gloss Champagne (302XX5297 add "FS" for full sheet)
Gloss Natural (302XX9797 add "FS" for full sheet)



Gloss Bronze (302XX9397 add "FS" for full sheet)
Gloss Dark Brown (302XX6397 add "FS" for full sheet)
Gloss Black (302XX2097 add "FS" for full sheet)



Gloss Red (302XX4097 add "FS" for full sheet)
Gloss Blue (302XX3097 add "FS" for full sheet)
Gloss Green (302XX7097 add "FS" for full sheet)

Gloss Availability	0.5	1.0	1.5	2.0
Natural (9797)	●	●	●	●
Champagne (5297)	●	●	●	●
Gold (9897)	●	●	●	●
Bronze (9397)	●	●	●	●
Dark Brown (6397)	●	●	●	●
Black (2097)	●	●	●	●
Red (4097)	●	●	●	●
Green (7097)	●	●	●	●
Blue (3097)	●	●	●	●